



## **CoreDRAW X7 Plug-in Installation**

**Shenzhen RuiDa Technology CO., LTD**

Tel: 86- 0755-26066687

Fax: 86-0755-26982287

Web: [www.rd-ac.com](http://www.rd-ac.com)

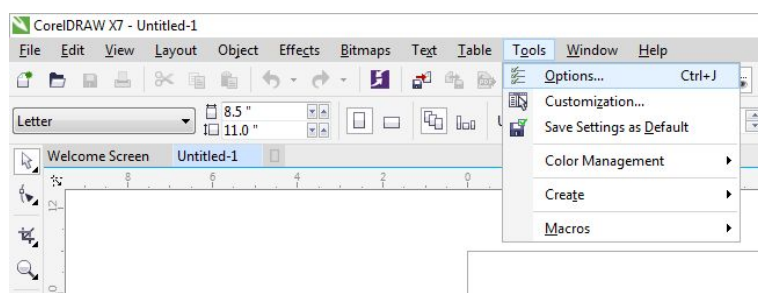
E-Mail: [support@rd-ac.com](mailto:support@rd-ac.com)

Add: 1B-1, Building 5, Tian'an Nanyou Industry Area,  
Dengliang Road, Nanshan District, Shenzhen, P.R.C.

Plug-in software supports the installation of CorelDraw11to X7, but it cannot support some simplified CorelDraw version.

Here taking CorelDraw X7 installation for example to introduce plug-in software installation process.

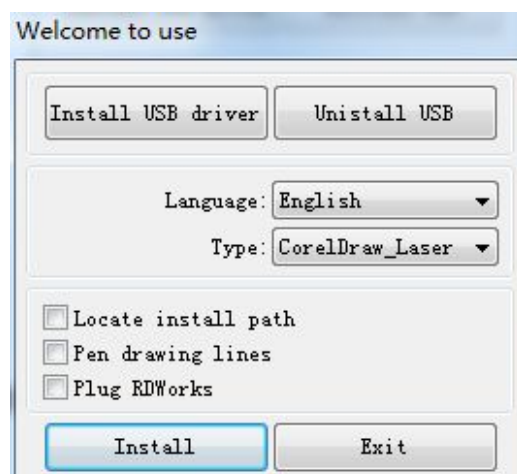
1. Running CorelDrawX7 before installing plug-in software.
2. Click Menu [Tools] - > [Options].



3. Select VBA in pop-up dialog box, do not check the “delay load VBA” on the right side, then “OK”, and exit CorelDraw.

,

4. Running the installation program, choose “Type” as “CorelDraw\_Laser”, then click **【Install】** .




5. The installer will automatically install DCAM plug-in software to all the installed CorelDraw versions on the operating system and then pop-up dialog box.



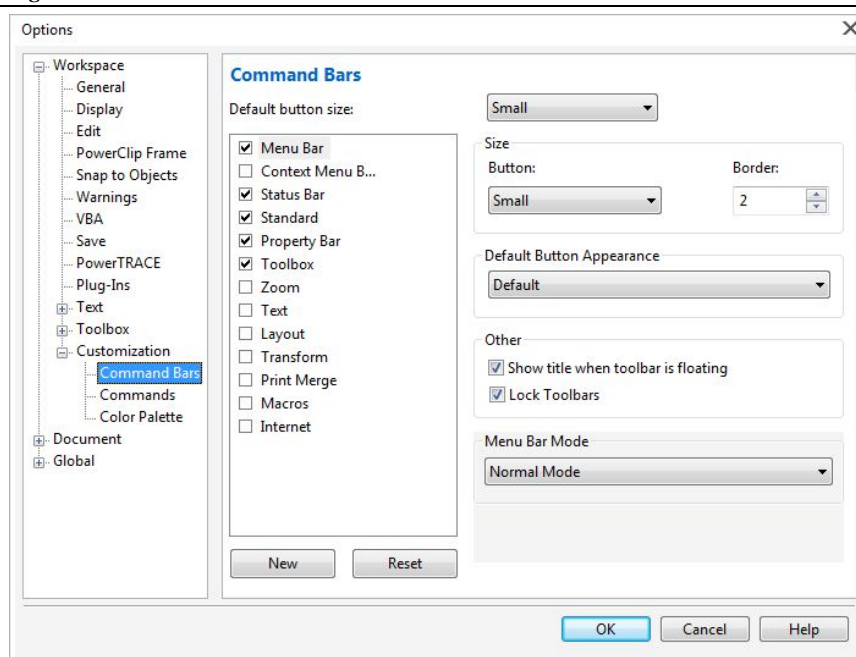
Note: For some versions of CorelDraw (such as green version) may not automatically position to the location where the CorelDraw is installed on. Only need to check “Locate install path” on the installation software, and then manually browse to position the folder location to the root of CorelDraw software where the plug-in program should be installed on.

Exit the installation program, and run CorelDraw.



6.  will be appeared in the CorelDraw interface toolbar.

Note:

- 1.If the button does not appear, you should select **【Tools】** -> **【Option】** in the menu.



2. Select “command bar” on the left and then check “Visual Basic applications”, and select

“OK”.  , this tool bar will be appeared in the software, select the first button .

Note: If the toolbar does not appear, reinstall the CorelDraw software.

3. In the “macro location” select “GlobalMacros (Rlaser17V8.gms)”. And select “RlaserV8.ImportDsFile” in the “Macro name”. And then “Run”.

